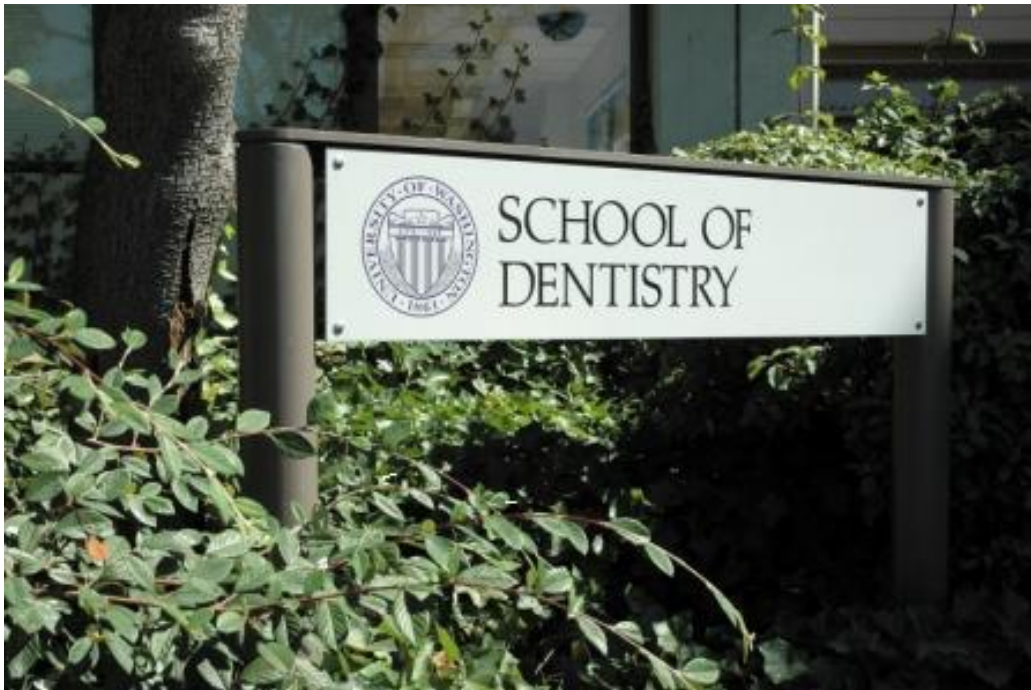


W **SCHOOL OF DENTISTRY**
UNIVERSITY *of* WASHINGTON
Office of Clinical Services

WREB Examination
Candidate Information Pamphlet
March 24 - 27, 2021



Welcome to the University of Washington School of Dentistry. The following serves as general information about the facilities and services available for the WREB examination hosted at the University of Washington School of Dentistry.

The University of Washington School of Dentistry is not able to interpret the information contained in the Candidate Guide provided by the WREB. **Questions regarding the examination process (e.g., content, patient requirements, paperwork or forms, etc.) should be directed to the WREB office at (602) 209-5400, Option 1.**

COVID-19 Screening and Protocols

All candidates will be required to complete a Daily Attestation upon arrival to the D165 Simulation Clinic and Lab and provide contact tracing information.

COVID-19 SYMPTOM SELF-ATTESTATION FOR ON-SITE PERSONNEL AND VISITORS

Since your last day of work, or since your last visit to a University facility, have you experienced any of the following symptoms?

- A new fever (100.4 F or higher) or chills;
- A new cough;
- New shortness of breath that you cannot attribute to another health condition;
- Flu-like symptoms;
- New muscle pain (myalgias) or fatigue;
- Vomiting, diarrhea, or stomach pain;
- Runny nose or sore throat;
- Red or painful eyes, itching or scratchy eyes; or
- New loss of taste or smell.

1. In the past two weeks, have you had close contact with someone diagnosed with COVID-19? Close contact is defined as:

- A. Being within 6 feet of a person with COVID-19 for a cumulative total of at least 15 minutes during a 24 hour period (even if both persons were wearing face coverings), living with or caring for a person who has COVID-19, or having direct contact with infectious secretions (e.g., being coughed on, kissing, sharing utensils).

2. Have you attended an indoor social or community gathering with 10 or more people in the past two weeks, where you or others were not wearing masks and not social distancing 6 feet apart or more?

I attest that prior to coming in to the UW School of Dentistry on today's date, I do not have any of the above symptoms and have not recently had close person contact with a confirmed COVID-19 person.

I read the above statement.

I attest that I do not have any of the above symptoms.

If you are sick or have one or more of the above symptoms:

- You must stay home or leave the UW facility.
- Contact your health care provider for medical guidance.

University of Washington COVID-19 Visitor Log

Washington state regulations requires a visitor log to support COVID-19 contact tracing efforts. By providing this information you are self-attesting that you have read the University's COVID-19 Symptom Self-Attestation for On-Site Personnel and Visitors form and that you do not have any of the listed symptoms.

If you have symptoms of COVID-19 at the time of your scheduled visit, please inform your University contact that you need to reschedule your visit. If you develop symptoms of COVID-19 during your visit, please inform your University contact and leave.

Your information will only be shared with University and public health officials involved with contact tracing if needed in the event of an exposure to COVID-19. They will contact you to inform you of your potential exposure, answer your questions and provide public health resources. The University will not use this information for any other purpose. If this list is not used within 30 days, it will be destroyed.

Date	Time	Name	Company/Affiliation	Phone	Email	Location Visited

Exam Location

The School of Dentistry is located south of the main campus, in the Warren G. Magnuson Health Sciences Center, 1959 NE Pacific Street, Seattle, WA 98195.

- The manikin exam (Pros, Operative, Endo and Perio) will be held in D1 Simulation Clinic: D165
- Husky Room – D152 with snacks/refreshments for candidates

Parking:

Exam Candidates should park in Visitor Parking – Lot S-1. See enclosed map. The fee is \$18.00 Monday – Friday and \$6.00 on Saturday. Parking attendants will be available beginning at 6:00am Monday – Friday and at 7:00am Saturday morning.

Self-serve parking is available, allowing you to skip the gatehouse and pay on the spot. These machines accept Visa, MasterCard and American Express as well as dollars and coins. Pay-by-phone parking is available as well -

<http://www.paybyphone.com/>

For updated parking information, visit the parking services web site: transportation.uw.edu or the parking services audio library at 206-685-1543.

Transportation:

Metro and Community Transit (originating outside of King County) offer bus routes to the University of Washington Campus. For route information the following information may be useful:

- *Metro Transit:* 206-553-3000
 - Call for trip planning, routes, schedules, fare and pass information
 - <http://metro.kingcounty.gov/>
- *Sound Transit:* 206-398-5000
 - For trips originating south and east of Seattle
 - <http://www.soundtransit.org/>
- *Community Transit:* 425-353-7433
 - For trips originating in Snohomish County
 - <http://www.commtrans.org/>
- *Airport Transportation:*
 - Shuttle Express 425-981-7000
 - www.shuttleexpress.com
- *Taxis:*
 - Taxi stations are located on NE Pacific Street at the main entrance to the University of Washington Medical center. Frequently used Taxi services are as follows:

- Farwest 206-622-1717
- Yellow 206-622-6500

LODGING:

See page 10 for a list of hotels and motels in the vicinity of the UW School of Dentistry.

Facilities

Smoking is **STRICTLY PROHIBITED** throughout the entire University of Washington Health Sciences Center.

Telephones:

- Telephones are located in the Dental Clinics.
- Dial 9 to access an outside line.

Emergency Telephone Numbers

- 206-221-6839 UWSOD WREB School Coordinator – Carol Harvey
- 206-543-9599 Sterilization
- 206-351-2268 School of Dentistry Exposure and Incident Hotline (8am to 5pm)

Restrooms:

- Are located throughout the Health Sciences Facilities. Handicap accessible restrooms are available on the 1st floor and 4th floor of the D wing

Lost and Found:

- During the examination, the Sterilization Room (D338) will serve as the lost and found area

**THE UNIVERSITY OF WASHINGTON ASSUMES NO RESPONSIBILITY FOR
DENTAL INSTRUMENTS OR PERSONAL EFFECTS LOST OR STOLEN
FROM THE DENTAL CLINICS OR LABORATORIES**

Clinic Facilities:

Instruments and Equipment:

Candidates MUST provide their own instruments and equipment. The School of Dentistry does not have equipment, hand pieces, adapters, carts or lockers to loan. We do not have a School Supply Store available during the WREB Exam.

- Operator chairs and work surfaces will be provided in the work station

The School of Dentistry utilizes Star 430 SWL and Star 6 Pin Swivel. Any brand of 6 pin swivel/hand piece will work in our clinics and simulation clinic/lab. **The School of Dentistry does not rent or loan hand pieces or swivels to ANYONE.** Adaptors with 5 to 6 pins can generally be purchased from most dental suppliers. The D165 simulation clinic have BienAir Electric HP equipment available. The School of Dentistry does not rent or loan electric HP and motor.

For additional questions or specific hand piece information, contact our Dental Maintenance at (206) 543-5958.

Work Station (Operatories)

- Each candidate will be assigned a numbered work station in the clinic by WREB
- Review page 12 and 13 for location and clinic floor diagram



Digital Radiography

The School of Dentistry will be using digital radiography for all of the exam. Digital Phosphorous plates may be obtained from the Dispensary. All candidates will receive assistance with processing digital images.

NOTE: The following equipment/supplies **are not provided**:

- Hand piece or swivels
- Electric motor
- Impression gun
- Casting gold
- Ultrasonic scalers
- Heat source
- Carts, Lockers, instruments
- Endo - Acadental ModuPro kit (MPE E100)
- Pros – Acadental ModuPro (MP 300 ModuPRO One)

Storage:

- The UW School of Dentistry does not provide storage lockers for candidates. Items left in the Simulation Clinic and Lab following the exam will be held by the Health & Safety Manager – Carol Harvey – Room B471 (206) 221-6839 for 7 days, after which they will become the property of the UW School of Dentistry, or donated appropriately. The UW School of Dentistry recommends that candidates do not leave items of value unsecured in the clinics at any time.

Medical Emergencies

- The examiners will have access to the school's automatic external defibrillator (AED) and provide appropriate action according to the American Heart Association (AHA) standards until emergency responders arrive.
- Please follow the instructions posted in the clinic. In case of a medical emergency, dial '911'. One person should stay with the individual experiencing a medical emergency and one individual should go outside on the first floor between the D and B Wings adjacent to the S-1 parking lot, to direct medical personnel to the patient.

Body Fluid Exposure:

- Perform First Aid
- Eyes: Wash eyes at eyewash station for 15 minutes
- Other: Wash injured area with soap and water for 15 minutes and apply appropriate dressing from First Aid kit.

Notify UW SOD WREB Site Coordinator and call School of Dentistry Exposure Hotline at 206-351-2268, immediately. The Employee Health department recommends starting laboratory tests and medications for HIV post-exposure prophylaxis within 1 to 2 hours after exposure. Site Coordinator or designee will provide source patient counseling and escort the source patient to UWMC lab for a blood draw. Candidates will be seen in Employee health for counseling and/ or a blood draw.

- Work with UW SOD WREB Site coordinator or designee to fill out an Occupational Accident Report (OAR) per UW policy

Personal Protective Equipment:

- Disposable gowns are available and must be worn in occupational exposure situations and not outside of the Simulation Clinic and Lab.
- Disposable gloves, masks, and gowns are located in the Simulation clinic (D165).
- Candidates are to provide their own OSHA acceptable protective glasses.

Treatment Area & Clean Up Procedures:

- Candidates will be assigned a clinic work station. They are responsible for the care and cleanliness of the work station.
- Cavi wipes and spray are readily available and should be used following the “Wipe, Discard, Wipe” or “Spray. Wipe, Spray” methodology.
- Candidates are responsible for any damage to equipment. In addition to the placement of paper covers on counter tops, all work surfaces are to be disinfected with materials provided.
- All items should be disinfected at the end of each day.

Prior to each procedure:

- Complete work station inspection for unit operation
- Using a germicidal disposable cloth, the assigned work station should be wiped down and infection control barriers should be placed.
- Infection control barriers are inside the clinic and are available for use by the candidate.

At the end of each procedure:

- Remove all infection control barriers from the light, chair and work surfaces being careful to avoid cross-contamination.
- Dispose of the coverings in large containers available in the clinic. All surfaces, especially those not covered, should be disinfected with the germicidal wipes as provided.
- Needles and other sharp or breakable objects must be placed in the red “Sharps” containers located on the pentagon. These objects present serious hazards to the personnel collecting waste and must NEVER be placed in regular waste containers.

End of Day Procedures:

- Wearing clean gloves use the germicidal wipes provided to clean work surfaces in the cubicle.
- Cavi wipes and spray are readily available and should be used following the “Wipe, Discard, Wipe” or “Spray. Wipe, Spray” methodology.

Instrument Sterilization (Pre-Sterilization, Room D352/Sterilization, Room D338)

- The operating hours for sterilization is from 6:30am – 5:30pm during the WREB examination.
- Central Sterilization services do not assume any responsibility of lost/damaged items.
- The School of Dentistry staff will sterilize **clearly labeled, packaged instruments; however, candidates are responsible for debriding instruments and packaging in preparation for sterilization.** Sterilization pouches and supplies will be available. **It is the candidates’ responsibility to clean, package, label and date.**
- The UW School of Dentistry Sterilization Staff reserves the right to refuse sterilization service for inadequately or inappropriately packaged materials. The staff will be happy to assist candidates with packaging or sterilization of unusual size items.
- The sterilization facility utilizes autoclaves.
- ***PLEASE ALLOW 90 MINUTES TURN AROUND TIME FOR INSTRUMENT PROCESSING.***
- Central Sterilization complies with Federal AAMI guidelines for sterilization of dental instruments and CDC/OSHA infection control standards. Daily biological spore and air flow testing is conducted ensuring sterility of instruments. Records of such testing are available for review upon request.

Simulation Lab

The School of Dentistry does have limited Endo equipment, such as heat sources and rotary motor, or hand pieces for use during the WREB exam. Candidates electing to utilize this equipment will be required to sign a limited liability form prior to the exam, which will incur a charge of at least \$25.00.

The following equipment is used at the UW SOD - Sybron TCM Endo III rotary and Sybron Endo Touch n' Heat 5004. Candidates not familiar with the equipment should bring their own. Training will not be provided on equipment.



The Endodontic, Prosthodontics, Operative and Periodontic exam will be held in the D165 simulation clinic/lab. Candidates will mount their own ModuPro on a manikin (magnetic type) which is provided. Shrouds should be used.

There are 6 digital x-ray stations and 2 Faxitron stations.

- The University of Washington will supply manikin head, mounting plates and fill-in sextants available for use during the Endodontic exam.

University of Washington School of Dentistry Contact Information

- Carol Harvey – UW School of Dentistry WREB Site Coordinator
206-221-6839 or 253-670-3520 cell
Email: cjharvey@uw.edu
- Dave Fox – UW School of Dentistry Maintenance Manager
206-543-5958
Email: davefox@uw.edu

Expendable Materials List		
Supplies listed below will be made available to all Candidates during the exam		
#15 Blade	Evacuator Tips	Polishing Materials for Restoration
2 x 2 Cotton Squares	Face Masks	Prophy Paste
Amalgam Capsules & Amalgamator	Facial Tissue	PVC Material
Articulating Paper	Floss	Retraction Cord
Autoclave Tape	Flowable Composite	Rubber Dams
Bond	Gloves	Rubber Dam Napkins
Cement	Headrest Covers	Saliva Ejectors, Standard
Composite Restorative Materials	Hemostatic Agents	Sectional Matrix System
Cotton Pellets	Impression Materials (for cast gold)	Soap
Cotton Rolls	Instrument Trays (disposable or metal)	Topical Anesthetic
Cotton Swabs	Local Anesthetic	Trash Bags
Curing Lights	Matrix Tweezer, Forceps, & Clamp	Tofflemire Band & Matrix Bands
Deck Paper	Mouthwash	Tray Covers
Disinfectant	Needles, Short and Long	Wedges
Drinking Cups	Paper Towels	X-ray Developer and Fixer
Etch	Patient Bibs	X-ray Film

Our Hand piece hook-ups are designed for a 6-hole hand piece or adapter and BienAir electric equipment. Adapters are not supplied. Air and water are available. Gas and 95% alcohol are available for heat source. The Candidate must supply his own heat source – Bunsen burner, etc. The School does not supply a heat source for candidates.

Acadental ModuPRO

The University of Washington will not be supplying the ModuPro. Candidates should contact Acadental directly at www.acadental.com or by phone at 913-384-7390 for purchasing both the ModuPROs. Prosth ModuPRO One - MP_R320 (MP 3000 ModuPro One for refill kit) and Endo Kit MP_E120_PC (ModuPRO Endo MP_E100 for refill kit)

Additional Resources for Dental Supplies:

- Burkhart Dental Supply
<http://www.burkhartdental.com>
1-800-562-8176
- Schein Dental
<http://henryschein.com/us-en/DENTAL>
1-800-372-4346

“PATIENT BROKERING, I.E. THE SELLING OF PATIENTS, WILL NOT BE TOLERATED UNDER ANY CIRCUMSTANCE WITHIN THE SCHOOL OF DENTISTRY AND/OR ON THE PREMISES. VIOLATION OF THIS RULE WILL RESULT IN IMMEDIATE REMOVAL FROM THE CAMPUS.”

LODGING INFORMATION

We are unable to provide rates due to the variance of rates throughout the week and year.

<p>taybridge Suites 1119 Mercer Street Seattle, WA 98109 206-596-2301 www.ihg.com</p>	<p>College Inn 4000 University Way Northeast, Seattle, WA 98105 206-633-4441 www.collegeinnseattle.com</p>	<p>Seattle Marriott Waterfront 2100 Alaskan Way Seattle, WA 98121 206-443-5000 https://www.marriott.com/hotels/travel/seawf-seattle-marriott-waterfront/</p>
<p>Silver Cloud Inn – University District 5036 25th Ave NE Seattle, WA 98105 206-526-5200 https://www.silvercloud.com/university/</p>	<p>Stay Pineapple at University Inn 4140 Roosevelt Way NE Seattle, WA 98105 206-632-5055 https://www.staypineapple.com/university-inn-seattle-wa</p>	<p>Travelodge by Wyndam Seattle University 4725 25th Avenue NE Seattle, WA 98105 206-962-8683 https://www.wyndhamhotels.com/travelodge/seattle-washington/travelodge-seattle-university/overview</p>
<p>Talaris Conference Center 4000 NE 41st St Seattle, WA 98105 206-268-7000 https://www.talariscc.com</p>	<p>Stay Pineapple at Watertown 4242 Roosevelt Way NE Seattle, WA 98105 206-826-4242 https://www.staypineapple.com/watertown-hotel-seattle-wa</p>	<p>Residence Inn Seattle - Lake Union 800 Fairview Ave N Seattle, WA 98109 206-624-6000 http://www.marriott.com</p>
<p>Inn at the Market 86 Pine Street Seattle, WA 98101 206-443-3600 800-446-4484 (toll-free) www.innatthemarket.com</p>	<p>Fairmont Olympic Hotel 411 University Street Seattle, WA 98101 206-621-1700 www.fairmont.com/seattle</p>	<p>Crowne Plaza Downtown 1113 6th Avenue Street Seattle, WA 98101 206-464-1980 http://cphotelseattle.com/</p>
<p>Warwick Hotel 401 Lenora Street Seattle, WA 98101 206-443-4300 https://warwickhotels.com/seattle/</p>	<p>Hotel Theodore Seattle 1531 7th Avenue Seattle, WA 98101 206-621-1200 https://hoteltheodore.com/</p>	<p>Sheraton Grand Seattle 1400 6th Avenue Seattle, WA 98101 206-621-9000 www.sheraton.com/seattle</p>

Medical Emergency Procedures



NON LIFE-THREATENING EMERGENCIES

- Use the first aid kit if necessary – First aid kits are available in all clinics and laboratories.
- Contact your personal health care provider OR, if necessary, go to the UW Medical Center Emergency Room (normal fees will apply).
 - Students may contact Hall Health at 685-1011
- Notify supervisor/instructor.
- Report the incident within 24 hours- see below for guidelines.



LIFE-THREATENING EMERGENCIES

- Call **9-1-1**.
- Keep victim still and comfortable.
- Administer first aid if trained.
- Notify Supervisor; they or their delegate will meet emergency personnel at the following location:
Health Sciences: Between B & D loading dock
Center for Pediatric Dentistry: Outside Surgery Center
- Report the incident within 24 hours- see box below for guidelines.

9-1-1



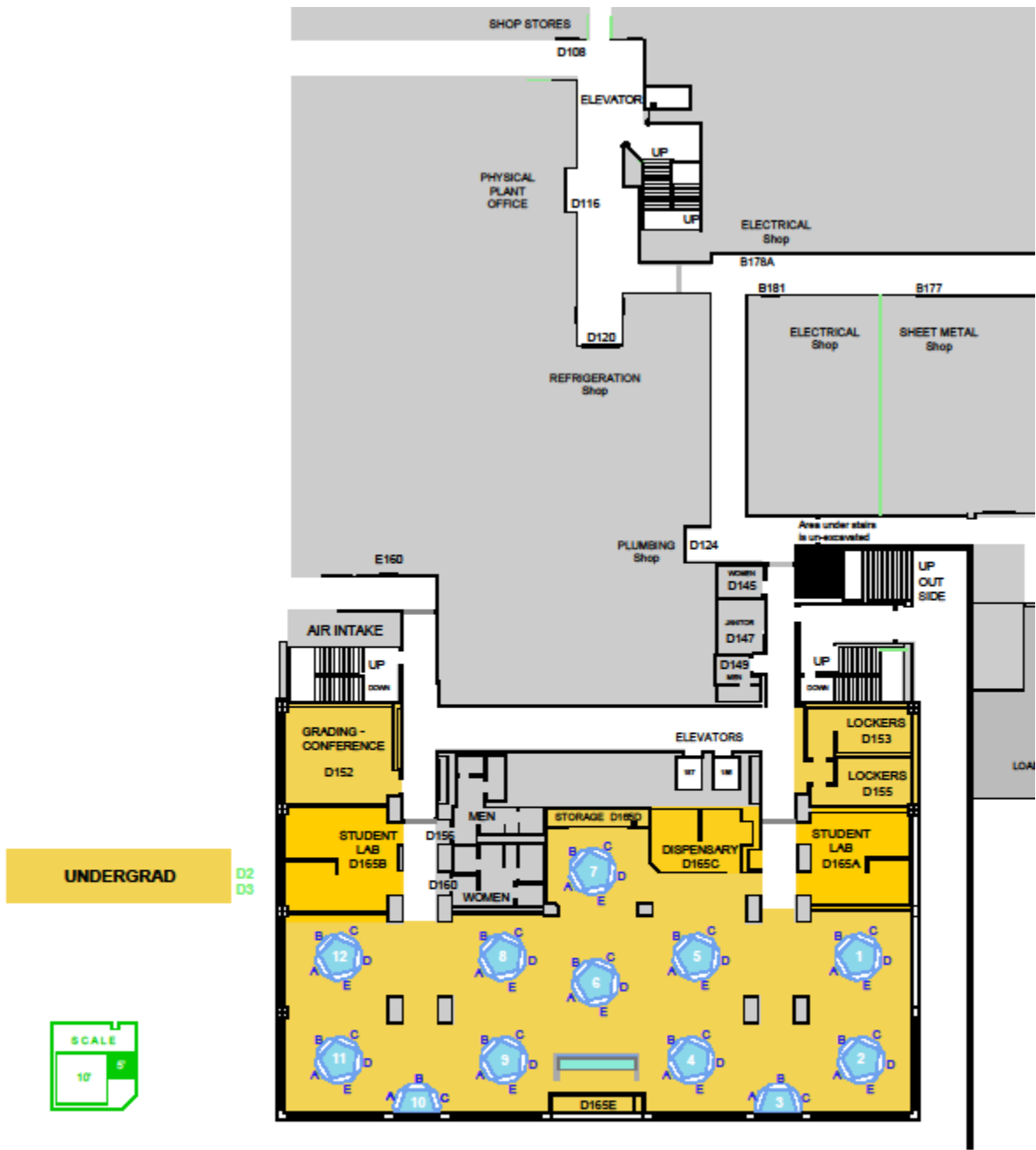
BLOODBORNE PATHOGEN EXPOSURE

- Stop work immediately.
 - EYES: Immediately wash eyes at eye wash station for 15 minutes while holding eyelids open.
 - SKIN: Scrub exposed area thoroughly with warm soapy water for 15 minutes.
- Health Sciences:**
Between 8:00 Am and 5:00 PM: Notify supervisor/instructor. **AND**, notify the Exposure/Incident Hotline at 206-351-2268. After 5:00 PM: Go directly to the UWMC Emergency Room.
- Center for Pediatric Dentistry:**
Notify supervisor or faculty to manage contaminated instruments/needle. Supervisor will start exposure process.
- ALL: Report the incident within 24 hours- see box below for guidelines.

- If injured person is a patient or a visitor, report incident via Patient Event Form Link: <https://dental.washington.edu/health-and-safety/event-reporting/> (Note: To log-in, enter your main User Name with sod\ before it (for example: sod\janesmith) Enter your main SOD password (the same one you use to log onto your computer for work)
- If injured person is student, staff or faculty, report incident via OARS Link: <http://www.ehs.washington.edu/ohsoars/index.shtm>

Emergency Contact Information

Emergency: 9-1-1 Non-emergency UW Police: 206-685-UWPD (8973) Exposure/Incident Hotline: 206-351-2268



University of Washington
DENTAL SCHOOL

D1 SIMULATION CLINIC

1ST D
FLOOR WING

1 SECTION

